



MARGDARSHAK SEVA SANSTHAN



ANNUAL REPORT 2024



83, Royal park, Patpariya, Ambikapur, CG, India 497001
Ph: 9617155715 | msscginidia@gmail.com | www.msscginidia.org



Location of MSS operations





About the Organization

Margdarshak Seva Sansthan is a non-profitable organization was formally inducted in 1995. MSS was registered as a voluntary organization under the societies Registration Act. MSS works with communities on a broad range of development & strengthening initiatives.

MSS works in Surajpur, Surguja, Korba and Korba of Chhattisgarh covering 350 villages with more than five lakhs population. The broad Spectrum of intervention domain include- promotion of Gram Sabha for self-governance, formation and strengthening of village level people's organization, promotion of women Groups for the empowerment of women, early childhood also primary education, child rights. Child labour & working with persons with disability on community-based rehabilitation, promotion of organic farming, conservation of natural resource especially wild foods plant, forest and water pollution for better livelihood & environment etc

Vision

MSS envisage endeavouring for establishing self-reliant, self-respecting and an autonomous society. MSS believes that for building a better society, community should rely on its own resources, environment, also they should able to frame their own experience based norms, management system. Rules and mechanisms that shall further their sustenance and facilitate them to blossom into a wholesome society

Mission

MSS is to empower the human resources through capacity building and awareness by trained professional guidance to promote village level CBOs, program for human being sustaining and Surviving. The major focus area of MSS are livelihood promotion leadership and skill development, promotion of education, conservation and promotion of natural resources, and different right based action approach for the vulnerable and deprived section of rural areas.



From the Director's Desk

It is my privilege to say that in our democratic India 66% of population lives in villages. Where are the poverty, unemployment, health facilities and percentage of literacy the primary problems, our economic system is based on agricultural, social forestry and rural employment, I am from remote small village and grown up by facing above problem.

As I started my careers as social worker in 1990 I concentrate in the fields of forest which is the primary sources of life in rural area. With the help local resident, I started CHIPKO movement to saved valuable forestry.

Then I just educated in awareness for cleanness and provide better facilities and atmosphere to new generation who will be our tomorrow.

Finally, I am working with disabled people, I stared a program for them with collaboration with some foreign agency.

Disabled people are just like us but we have to boost their confidence. Our organization is working with them to make them social aware practically strong and making them confidence, we have to support them, that they can generate becomes self-employment and strengthened.

My holy program to just view equal chance and love

Director

Mehdilal



INDEX

SR	content	Page No.
1	Institutionalising - farmer group	6
2	Institutionalising- Self-help group	7
3	Institutionalising- People with disabilities & Children Group	8
4	Institutionalising- women group	9
5	Water harvesting and Irrigation- check dams	10
6	Water harvesting and Irrigation- Lift irrigation	11
7	Viable Livelihood- Mushroom cultivation	12
8	Viable Livelihood- Goat rearing	13
9	Viable Livelihood- vegetable cultivation	14
10	Protection & Conservation of natural Environment- Awareness	15
11	Protection & Conservation of natural Environment- Plantation	16
12	Protection & Conservation of natural Environment- Agroforestry	17
13	Rehabilitation of wasteland	18
14	Sustainable Agriculture- Paddy cultivation	19
15	Sustainable Agriculture- Millet cultivation	20
16	Sustainable Agriculture- Drought resistance crop	21
17	MSS Impacts	22
18	Organisation structure	23
19	Board of governors	24
20	Supporting partners	25
21	Financial Reports	26-28



Programs & Achievements

1. Institutionalising

- **Farmer group:** MSS has formed farmer groups consisting of farmers which include small landholder farmers and women. To facilitate this initiative, training sessions have been conducted to educate the members on the concept of farmer groups. Additionally, monthly meetings for the farmer groups are organized. A federation of farmer groups has also been established, which is connected with agricultural societies.



**10 Farmer group
with 1 Fedration**



**660 Total
members**



**22 Training to
farmer group**



85 Meeting



- **Self Help Group:** *MSS has successfully formed Self Help Groups (SHGs) for women for their livelihood and Forest conservation. These groups have received comprehensive training and continue to benefit from regular sessions focused on the SHG concept and its management. Additionally, monthly meetings have been held, and these SHGs have been effectively federated.*



230 SHGs



2300 Total members



**12 training on SHG
concept in 2024**



**718 Meetings with
5070 participants in
2024**



- **People with disabilities:** MSS is dedicated to improving the lives of individuals with disabilities (PWDs) by prioritizing accessibility, inclusivity, and empowerment. MSS has initiated the creation of community-based rehabilitation (CBR) committees & Disable people organisation (DPO) specifically designed to improve the quality of life for individuals with disabilities and guarantee that they enjoy equal opportunities across all areas of life, including education, employment, social engagement, and healthcare.



10,000
Beneficiaries



130 CBR
committees



117 DPO

- **Children Group:** MSS has established children groups for their rights, entitlement, empowerment and awareness on various aspects such as education, child rights, entitlement, health and forest conservation.



- **Women Group:** Mss has established 4 Women group Federation, three at cluster and one at district level to strengthen women. This group is working for Protection and conservation of natural environment, livelihood, women rights, entitlement and raising awareness on different subjects.



District level Women federation Meeting



Federation meeting
at cluster level



Federation
training at village



Federation meeting
at cluster level



Federation meeting
at cluster level



2. Water harvesting and Irrigation

- **Check Dams:** *MSS has successfully constructed new check dams for water harvesting in project areas, supported by BMZ-KKS. These check dams enable farmers to irrigate acres of land. Furthermore, existing check dams have been repaired as part of this initiative, facilitating the irrigation.*



**12 new check
dams**



**Repaired 12
existing dams**



**Irrigating 188
acres**



**111 families
benefited**



- **Lift Irrigation:** In 2024, MSS successfully installed bore-wells equipped with solar-powered pumps for lift irrigation, effectively irrigating over acres of land.



**Established 7
borewells**



**Irrigating 61
acres**



**benefiting 45
families**



**zero
emission**



3. Viable Livelihood

- **Mushroom cultivation:** *It is significant components of the livelihood program promoted by MSS. In 2024, we organized a training session focused on mushroom cultivation for women beneficiaries, which encompassed various facets of the cultivation process and value addition techniques. The six mushroom units established in 2023 have remained a vital source of income for women.*



**A training on
Mushroom
cultivation**



**73 Women
beneficiaries**



Exposure



**established
cultivation units**



- **Goat rearing:** MSS facilitated a training session on goat rearing in 2024, identifying and training a total of 46 beneficiaries in this area. Of these, 37 beneficiaries received 148 goats following their training.



**Distributed 148
Goats**



**A training on
Goat rearing**



**67 Women
beneficiaries**



**high production
rate**



- **Vegetable cultivation:** *MSS is prioritizing sustainable agriculture by promoting vegetable cultivation as a viable source of income for communities. In this context, MSS is providing training and seeds for the cultivation of tomatoes, potatoes, cucumbers, chilies, brinjal, and other vegetables.*



**2 training on
vegetable
cultivation**



**Area cultivated: 20
acres**



**Beneficiaries:106
families**



Viable Livelihood



4. Protection & Conservation of natural Environment

- **Awareness:** Workshop and meeting have taken place, leading to the formation of a Conservation Group. This group is responsible for monitoring and extinguishing forest fires. A sustainable harvesting protocol for forest products has been created and is being communicated to forest dwellers and local communities. The efforts of MSS have yielded positive outcomes, evidenced by a decrease in deforestation caused by illegal small-scale mining activities & aggressive harvesting methods. MSS is actively collaborating with authorities to further mitigate deforestation.



Awarness to Women
group



Training for
sustainable
harvesting protocol



Training on Fighting
Forest Fire



Workshop on Forest
conservation



- **Plantation:** *MSS has undertaken plantation initiatives aimed at protecting and conserving the natural environment in partner with NTFP. In this effort, MSS has successfully planted saplings across hectares of land. To support this endeavour, MSS has established a nursery dedicated to growing native wild saplings.*



75,000 saplings
planted



On 175 hectares
of forest land



plantation
activity



High surviving
rate



- **Agroforestry:** *To advance agroforestry, MSS has successfully planted 2,382 seedlings across 40 acres, enhancing soil health, promoting inter cropping, boosting biodiversity, and strengthening climate resilience, all of which contribute to increased productivity.*



**2382 saplings
planted**



**On 40 acres of
land**



**42 families
benefited**



**Promoting
intercropping**



5. Rehabilitation of wasteland

- **Wasteland rehabilitation:** *It represents a key strategy employed by MSS to promote sustainable agriculture. Numerous areas remain unutilized because of their unregular terrain and shape or the desertification of the topsoil. However, MSS, through its rehabilitation efforts, is able to make these lands productive again.*



213 Acres of land
Rehabilitated in 2024



Decreasing
desertification



Benefiting 213
families



Making land fir for
agriculture



6. Sustainable Agriculture

- **Paddy cultivation:** *MSS is actively encouraging the cultivation of indigenous paddy varieties and has identified multiple local strains that are both sustainable and economically viable. In this context, MSS is providing training & supplying local seeds to farmers.*



**MSS provided seeds
to 216 families in
2024**



**Cultivation on 324
acres of land**



**cultivated twice a
year**



high production rate



- **Millet cultivation:** *MSS is promoting for the cultivation of indigenous millet varieties that are not only nutritious but also resilient in challenging environments. In this context, MSS is working to raise awareness and provide millet seeds to farmers.*



Cultivated by 56 families



Cultivation in 23 acres of land



High production



sustainable farming



- **Drought resistance crop:** *MSS has been actively promoting for drought-resistant crops. On this regard, MSS has introduced the cultivation of 'kochai,' also known as taro root or eddoe.*



**Rs. 9,72,000
worth production**



**200mfamilies
involved**



**Total production:
16200 Kgs**



**Cultivation on
213 Acres**

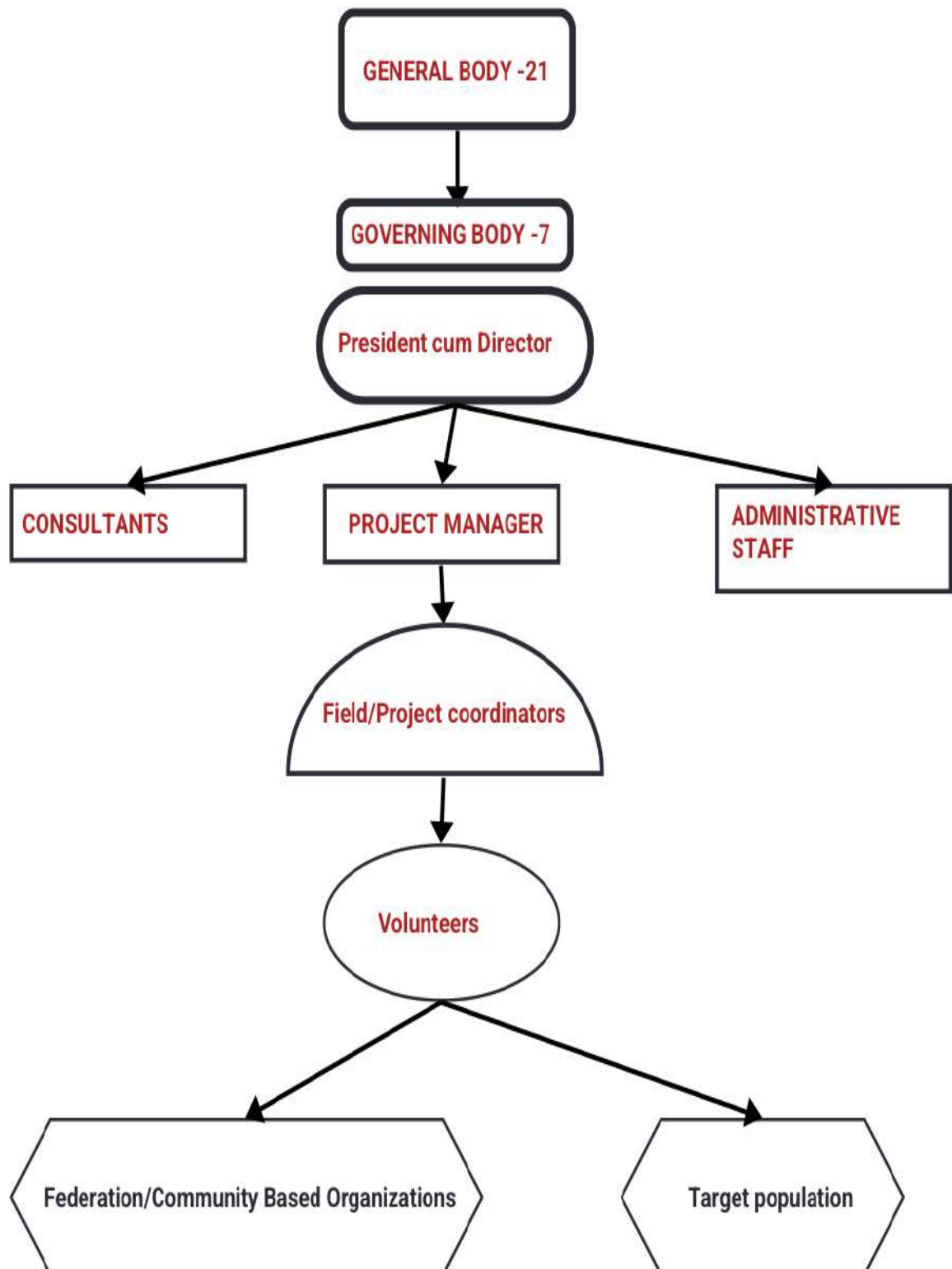


MSS Impacts

- Revitalised a total of 47 SHGs
- Total 30 training on SHG concept to 1010 participants.
- 1007 SHG meetings with over 7000 participants.
- Established federation of SHG at cluster and district level
- 7 training on mushroom cultivation.
- Established 6 mushroom cultivation unit.
- Distributed over 200 goats to 52 families for livelihood.
- Formation of 10 farmer group with 660 members.
- 19 training on farmer group concept to 816 farmers
- 151 farmer group meetings with 2783 participants
- Establishment of farmer group federation with 111 members
- 20 training workshops on MGNREGA, FRA to 622 participants.
- 29 Workshop on different government schemes and regulations to 995 participants.
- 29 Workshop on village development planning to 947 participants.
- 30 Training on sustainable agriculture to 1098 farmers.
- 4 Training on cultivation of vegetables and drought-resistant crops to 276 participants
- 75000 seedlings plantation on 175 hectares of land
- Vegetable seed distribution to 90 families
- Vegetable cultivation on 46.25 acres
- Seeds to 285 families for cultivation of millets and pulses on 174 acres of land.
- Drought resistance crop Seed distribution to 141 families for cultivation on 32 acres of land.
- Indigenous paddy seeds to 289 families for cultivation on 324 acres of land.
- Establishment of seed bank.
- 33 check dams constructed, irrigating 248 acres of land of 140 families.
- Establishment of 17 solar power based borewell, irrigating 149 acres of land of 65 families
- Rehabilitation of 334 acres of wasteland for agriculture
- Awareness and workshop on Protection and conservation of natural environment.
- The impact of MSS's efforts is significant; to date, the organization has successfully protected over 100 million plants and trees from being cut down due to deforestation. In the past decade, MSS has facilitated the planting of more than 100,000 native wild plant species. The organization actively promotes horticulture and agroforestry as means to ensure sustainable environment. MSS has engaged with over 100 villages, successfully conserving more than 3,300 hectares of forest land.



Organizational structure





BOARD OF GOVERNERS

TRUSTEES

The Trustees of the MSS constitute the governing board of Margdarshak Seva Sansthan (MSS). The Trustees are responsible for the overall vision and mission of MSS and provide guidance, act as a sounding board and the final authority for the redressed of grievances, and intervene if there is a crisis. Similarly individual Trustees involve themselves with the work of MSS which is of direct interest to them and also provide advice and guidance to the team member, work, workplace and administration when called upon to do so.

Mehdilal (President)

Mehdilal, who is the President of Margdarshak Seva Sansthan (MSS) has done pioneering work in fighting for the peoples right in Sarguja district. He hails from one of the target villages and being a local person he is well aware of the problems, issues and needs of the community. The organization is involved in right based activities since 1998. By the efforts of MSS corers of trees were protected from illegally cutting by the Forest department for establishment of big industries. The main thrust of the organization is on mass awareness creation, strengthening of the local bodies/people institutions to initiate community cantered development programs with emphasis on people with disable, women Children, indigenous and other marginalized sections in the society.

Gulzar singh (Vice – President)

He is higher secondary in art & leader of tribal. His experiences have Community mobilizations, Documentation, PRI, Gram sabha motivation and strengthen, Micro planning at village level. He is working last fifteen years rural area of community based rehabilitation for people with disable, conservation and promotion of wild foods and forest and batter education for early tribal children.

Naval sai (secretary)

He is higher secondary in art & leader of tribal. His experience has Community mobilizations, Documentation, PRI, Gram sabha motivation and strengthen, Micro planning at village level. She is working last ten years rural area of batter education for early tribal children & advocacy for batter implementation of policies, act for tribal people and conservation of natural resources.

Sona (under Secretary)

She is Graduate in art. Involved for more than one decade in early School Education and Training of Village education Workers, grass root activists especially on mobilization of women.

Kesh Kumar (Treasurer)

Under Graduate in art. Involved for more than nine years in early childhood care and Education, Training of leadership for Villagers and disable people organization, Community based rehabilitation for people with disable on health, education, income generation activities, women leadership promotion and forest conservation.

Bharti neti (Trustee)

Under Graduate in art. Involved for more than five years in community based rehabilitation for people with disable and especially on mobilization of women.

Gulab ram (Trustee)

Graduate in art. Participatory researcher and activist in batter implementation of PESA & FRA. His experience has Community mobilizations, Documentation, strengthening of PRI, Gramsabha motivation and strengthen, Micro planning at village level. he is working last five years rural area of community-based rehabilitation for people with disable, conservation and promotion of wild foods plant and forest, women improvement and batter education for early tribal children.



SUPPORTING PARTNERS



BMZ is the most important task of German development policy includes the global realization of human rights, the fight against hunger and poverty, the protection of climate and biodiversity, health and education, gender equality, fair supply chains, the use of digitalization and technology transfer, and the strengthening of private investment to promote sustainable development worldwide

Karl Kubel Stiftung für Kind und Familie is a secular, charitable trust with its headquarters in Bensheim, Germany. It was founded by Karl Kubel, a former industrial entrepreneur. It is mostly engaged development work with a focus on poverty reduction and education.



Both ENDS envisions a world where human rights are respected, gender justice is realised, and the environment is fostered and protected, thus assuring a life in dignity and prosperity for all, now and in the future.



Financial Reports

Margdarshak Seva Sansthan

Royal Park H.No 83
Ambikapur 497 001
Distt.-Surguja (C.G.)

RECEIPTS AND PAYMENTS ACCOUNT [For the year ended on 31st March 2024]

PARTICULARS	Head Office [As per Separate Audit Report]	KKS A/c (Local Fund) [As per Separate Audit Report] [Incl.d. Project]	FCRA A/c [As per Separate Audit Report] [Incl.d. Project]	Total [Rs.]
[A] SOURCES OF FUND				
1 <u>Opening Balance</u>				
Cash in Hand	4,204.00	-	-	78,516.00
Cash at Bank	601,407.75	-	74,312.00	4,109,744.19
total (1)	605,611.75	-	3,508,336.44	-
2 <u>Income</u>				
Project Grant	-	-	3,582,648.44	4,188,260.19
Donation/Contribution	1,639,500.00	906,409.00	18,555,790.00	18,555,790.00
Bank Interest [HO/FC]	-	-	-	2,545,909.00
total (2)	1,639,500.00	906,409.00	222.00	222.00
3 <u>Other Receipts/Intra Funds transfer</u>				
Current Account [as per Contra]	-	1,299,000.41	-	1,299,000.41
[FC to H.O. /H.O. to FC]	-	-	-	-
Sundry Creditors for Expenses	-	-	3,150.00	3,150.00
Provisions for EPF	-	-	496,954.00	496,954.00
total (3)	-	1,299,000.41	500,104.00	1,799,104.41
total Sources [1+2+3]	2,245,111.75	2,205,409.41	22,638,764.44	27,089,285.60
[B] UTILISATION OF FUND				
1 <u>Expenses</u>				
1.1 Project Expenses (Revenue Exps)	-	2,056,990.00	17,019,627.80	19,076,617.80
1.2 Project Expenses (Capital Exps)	-	-	86,300.00	86,300.00
1.3 Administrative Exps (Project Exps)	70,008.52	2,817.38	2,528.00	75,353.90
1.4 Administrative Expenses	-	-	2,798.00	2,798.00
total (1)	70,008.52	2,059,807.38	17,111,253.80	19,241,069.70
2 <u>Other Payments/Intra Funds Transfer</u>				
Current Account [as per Contra]	1,299,000.41	-	-	1,299,000.41
[FC to H.O. /H.O. to FC]	287,520.00	-	-	710,989.00
Gratuity Fund Expenses	-	-	423,469.00	691,280.00
Previous Year Expenses Paid	-	-	691,280.00	691,280.00
total (2)	1,586,520.41	-	1,114,749.00	2,701,269.41
3 <u>Closing Balance</u>				
Cash in Hand	4,204.00	-	24,019.00	28,223.00
Cash at Bank	584,378.82	145,602.03	4,388,742.64	5,118,723.49
total (3)	588,582.82	145,602.03	4,412,761.64	5,146,946.49
total Utilisation [1+2+3]	2,245,111.75	2,205,409.41	22,638,764.44	27,089,285.60

per our Annexed Report of even date.

Atul Arun & Company

Chartered Accountants

Atul Arun & Company
M. No. 401180
AMBIKAPUR
(C.G.)
N.24401180BKBZIF2676

Certified that the above statement is true & correct

President
Margdarshak Seva Sansthan
Surguja

Treasurer
Margdarshak Seva Sansthan
Surguja (C.G.)

Secretary
Margdarshak Seva Sansthan
Surguja (C.G.)



Marg Darshak Seva Sansthan

Royal Park H.No 83
Ambikapur 497 001
Distt.-Surguja [C.G.]

INCOME AND EXPENDITURE ACCOUNT [For the year ended on 31st March 2024]

PARTICULARS	Head Office [As per Separate Audit Report]	KKS A/c (Local Fund) [As per Separate Audit Report]	FCRA A/c [As per Separate Audit Report]	Total [Rs.]
[A] INCOME	[Incl. Project]	[Incl. Project]	[Incl. Project]	
1 <u>Income</u>				
Transferred from Balance Sheet FC Fun	-	-	-	-
Voluntary Donations & Other Receipts	1,639,500.00	906,409.00	17,108,455.80	17,108,455.80
Bank Interest	-	-	-	-
Creditors Written Off	-	-	222.00	222.00
	1,639,500.00	906,409.00	67,653.00	67,653.00
			17,176,330.80	19,722,239.80
2 <u>Expenses Over Income</u>				
	-	1,153,398.38	-	1,153,398.38
	1,639,500.00	2,059,807.38	17,176,330.80	20,875,638.18
[B] EXPENSES				
1 <u>Expenses</u>				
1.1 Project Expenditure (Revenue Exps)	-	2,056,990.00	17,019,627.80	19,076,617.80
1.2 Project Expenditure (Capital Expendit	-	-	86,300.00	86,300.00
1.3 Administrative Expenses (Projects Ex	-	-	2,528.00	2,528.00
1.4 Administrative Expenses	70,008.52	2,817.38	2,798.00	75,623.90
	70,008.52	2,059,807.38	17,111,253.80	19,241,069.70
2 <u>Income over Expenses</u>	1,569,491.48	-	65,077.00	1,634,568.48
	1,639,500.00	2,059,807.38	17,176,330.80	20,875,638.18

per our Annexed Report of even date.
r Atul Arun & Company

Chartered Accountants
Atul Arun & Co.
M.No.401180
AMBIKAPUR
(C.G.)
Director
I Kumar
V-401180)
N:24401180BKBZIF2676

Certified that the above statement is true & correct

President
Margdarshak Seva Sansthan
Surguja

Treasurer
Margdarshak Seva Sansthan
Surguja (C.G.)

Secretary
Margdarshak Seva Sansthan
SURGUJA



Margdarshak Seva Sansthan

Royal Park H.No 83
Ambikapur 497 001
Distt.-Surguja (C.G.)

BALANCE SHEET

[As at 31st March 2024]

PARTICULARS	Head Office [As per Separate Audit Report)	KKS A/c (Local Fund) [As per Separate Audit Report)	FCRA A/c [As per Separate Audit Report)	Total[Rs.]
	[Incl. Project]	[Incl. Project]	[Incl. Project]	[Incl. Project]
[A] FUNDS & LIABILITIES				
1 General Fund				
Opening Balance	51,751.34	0.00	-	51,751.34
Add : Income over Expenditure	1,569,491.48	0.00	-	1,569,491.48
Less: Intra Project Fund Transfer	(1,299,000.41)	1,299,000.41	-	-
Less: Expenditure Over Income	0.00	(1,153,398.38)	-	(1,153,398.38)
	322,242.41	145,602.03	-	467,844.44
2 F.C. Fund				
Opening Balance	-	-	38,984.58	38,984.58
Less : Funds transferred to Projects A/c	-	-	60,657.00	60,657.00
Add: Income Over Expenditure	-	-	65,077.00	65,077.00
	-	-	164,718.58	164,718.58
3 Project Fund/s				
Opening Balance	-	-	-	-
Add : Grants received during the year	-	-	2,848,096.86	2,848,096.86
Add : Funds transferred to FCRA General A/c	-	-	18,555,790.00	18,555,790.00
Less : Amount transferred to Income & E	-	-	(47,388.00)	(47,388.00)
	-	-	17,108,455.80	17,108,455.80
4 Loans & Current Account				
	-	-	4,248,043.06	4,248,043.06
5 Gratuity Fund				
	281,830.41	-	-	281,830.41
6 Sundry Creditors for Expenses				
	-	-	-	-
7 Depreciation Fund				
	201,664.00	-	3,223,852.20	3,425,516.20
	805,736.82	145,602.03	7,636,613.84	8,587,952.69
ASSETS				
Fixed Assets				
	201,664.00	-	3,223,852.20	3,425,516.20
Current Assets				
Closing Balance	-	-	-	-
TCS Receivables (22-23)	15,490.00	-	-	15,490.00
Cash in Hand	4,204.00	-	-	28,223.00
Cash at Bank	584,378.82	145,602.03	24,019.00	5,118,723.49
	604,072.82	145,602.03	4,412,761.64	5,162,436.49
	805,736.82	145,602.03	7,636,613.84	8,587,952.69

For our Annexed Report of even date.

Atul Arun & Company

Chartered Accountants

Atul Arun & Co.
M.No.401180
AMBIKAPUR
(C.G.)
24401180BKBZIF2676

Certified that the above statement is true & correct

President
Margdarshak Seva Sansthan
Surguja

Treasurer
Margdarshak Seva Sansthan
Surguja (C.G.)

Secretary
Margdarshak Seva Sansthan
SURGUJA



हम एवं हमारी अवधारणा

मार्गदर्शक सेवा संस्थान एक अलाभकारी एवं गैर राजनैतिक संस्थान है जो छत्तीसगढ़ में गरीब, आदिवासी, महिलाओं, युवाओं एवं दिव्यांगजनों के लिए समुदाय आधारित सामाजिक, शैक्षणिक एवं आर्थिक विकास के लिए विगत 30 वर्ष से प्रयासरत हैं। हमारा प्रयास है कि स्वालम्बी, स्वशासी एवं स्वाभिमानी समुदाय स्थापित हो। आज के विध्वंसक विकास के कारण आजीविका के प्राकृतिक संसाधनों को समाप्ति के कंगार पे खड़ा कर दिया है। जिसके परिणाम स्वरूप आज कई प्राकृतिक आपदाओं पर गौर किया जा सकता है। अगर इसी गति से तथाकथित विकास चलती रही तो, हमारे जीवन का आधार ही समाप्त हो जायेगा। हमारे जीवन का सीधा रिश्ता प्रकृति से जुड़ा है वन जल एवं जमीन जीवन को आगे बढ़ाने के साधन हैं। जंगल जितना विविधतापूर्ण होगी, मिट्टी उतनी ही सजीव होगी, पानी उतना ही स्वच्छ होगा। ये तीनों जितना समृद्ध होंगे, जीवन उतना ही सहज होगी। इस कारण हम सबको आजीविका के प्राकृतिक संसाधन एवं जीवन के आधार जल, जंगल, एवं जमीन को बचाना आवश्यक है। आशा है कि इनके संरक्षण के लिए आप भी एक कदम अवश्य बढ़ायेगें, आप का एक कदम पूरे विश्व के जीवन को आधार देगा।

मेंहदीलाल